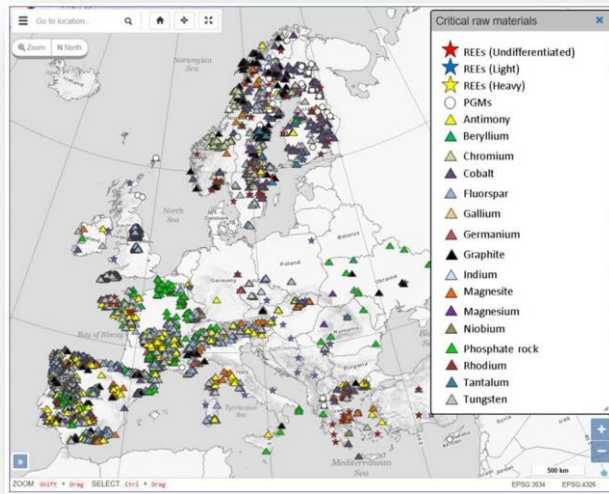


MINTELL4EU focus on harmonizing data, providing spatial data with extension of the current coverage and on thematic maps. Mintell4EU will provide an updated **electronic European Minerals Yearbook** and the **European Minerals Inventory** as a final product.



MINTELL4EU in particular liaises the work of former and ongoing EU-projects such as ORAMA (case studies on UNFC) and Minerals4EU (on data), bridges the GeoERA Raw Materials projects and provide the connection to the RMIS.

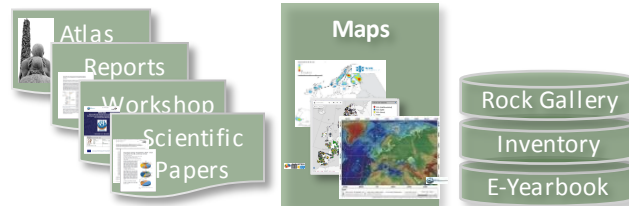
### Data & Information Flow



Future generation needs, responsible economical growth and societal wealth all relying on mineral raw materials that are sustainably produced.



GeoERA Raw Material adds to an improved knowledge base ensuring the sustainable management of the subsurface by providing reliable and harmonised information.



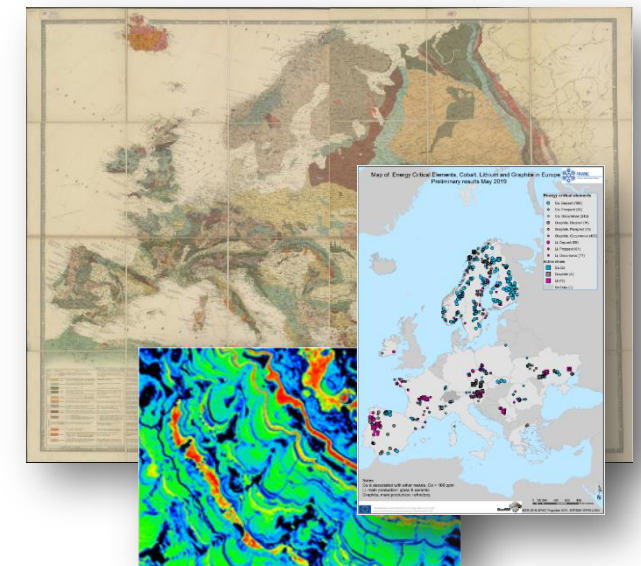
With GeoERA >30 National and Regional Geological Surveys Organisations supported by Marine Institutes serving in concert those societal needs that are a crucial, everlasting duty and important caretaking of our cultural heritage. GeoERA Raw Materials acts to achieve **EU policy goals** such as Sustainable Economic Growth, Responsible Sourcing inline with the Sustainable Developments Goals.



This project has received funding from the European Union's Horizon 2020 research and innovation programme under grant agreement No 731166



From traditional mapping to new resources and services for modern societies to achieve common societal challenges



More: <http://geoera.eu>

More: <http://geoera.eu>



Gives specific attention to **ornamental stone** resources for which Europe has a long tradition in mining, processing and usage. Increasing need for low-footprint production of construction materials and demand for maintaining European architectural heritage and cultural landscapes indicate the specific attention given.



Harmonised directories and visualisation through an atlas add to common understanding and serves to the improvement of communication across applications and needs.

Over the centuries, such resources have been of **significant importance to the economy** and the diversity of our built heritage. The transition to a more sustainable society may secure such impact also in the future. Proper and harmonised information about **geology, quarries** and **quality** are the main priorities in Eurolithos.



More: <https://www.eurolithos.org>

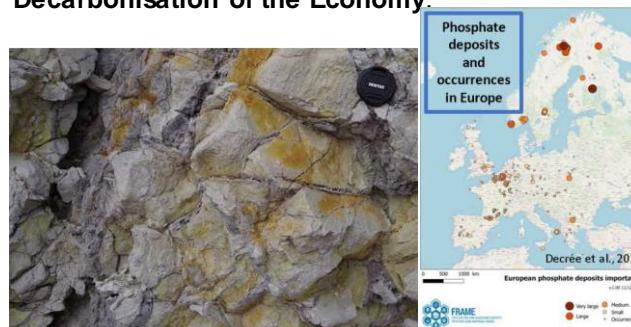


Addressing current EU concerns of reliable and suitable sourcing **FRAME** is designed to research Strategic and Critical Raw Materials (SCRM) in Europe to gain new insights into reserves and resources by applying, amongst others, predictive mathematical methods and define new mineral potential areas.

Specifically, **FRAME** addresses:

- **Critical and Strategic Raw Materials Map of Europe**
- **Critical Raw Materials in phosphate deposits**
- **Energy Critical Elements**
- **Niobium - Tantalum**
- **Historic Mining sites**

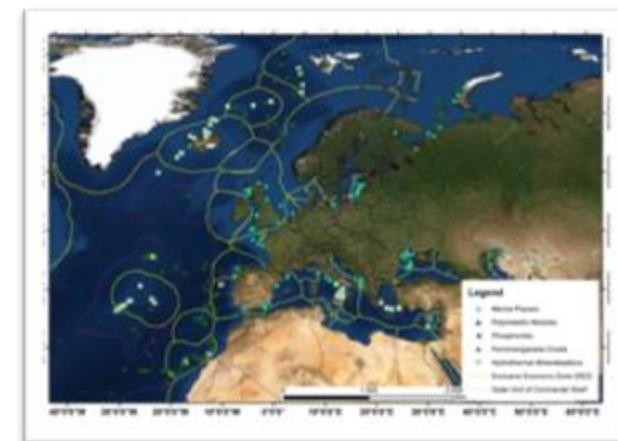
Data gathered and analysed in FRAME is paving the way to further metals recovery and improved sustainability of the European society. FRAME aims to contribute to the EU policies on Critical Raw Materials, The **Circular Economy** and **Green Economy**, **Conflict Free Minerals** and the **Decarbonisation of the Economy**.



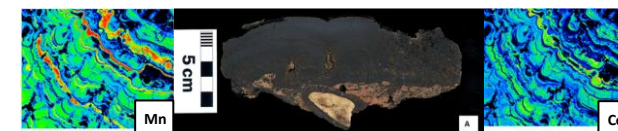
More: <http://www.frame.lneg.pt>



Within MINDeSEA GeoERA works on exploration and investigation of **Strategic and Critical Raw Materials (SCRM) from sea-floor mineral deposits in European waters**. Identifying areas for responsible resourcing and information on management and Marine Spatial Planning in European Seas are in its core of action.



Based on detailed studies and compiled data on geology, geochemistry, mineralogy and environmental issues on main deposit types MINDeSEA has produced the **first pan-European Map of Submarine Energy critical elements in nodules and crusts** in 2018 which will be continuously updated.



More: <http://geoera.eu/projects/mindesea2/>